



Bambirock

General Contracting

who are we

Pamperock General Contracting Company is one of the most diverse companies specialized in the field of architectural design and implementation in the Kingdom. Since its establishment in 2023

AD, the company's management has been keen to establish the rules of professionalism in all of our work. We have a team of highly qualified engineers, technicians and administrators who take it upon themselves to produce the work.

Professionally and completing projects for our clients and those efforts that transformed our company into being able to compete in the field of the labor market. Finally, we would like to emphasize that the trust of our clients is the most valuable thing we have and our full commitment to our clients to provide the best services.



Organizational Chart



Our servants



project
management



engineering
supervision



Engineering
design



Engineering
reports



The Technical
Office

Our goals

We strive with all our energy and capabilities to provide the best services in the field of architectural design and implementation for all your work, including residential, commercial, governmental, and entertainment projects. We seek to do this by utilizing the expertise of the work team, and developing our capabilities to be creative, appropriate, consistent with the principles of artistic principles, and achieving the best at the lowest cost.



Our vision

To advance the profession in line with international standards and to be a model for work in the region based on our extensive experience in this field so that our work is distinct and unconventional.

Our message

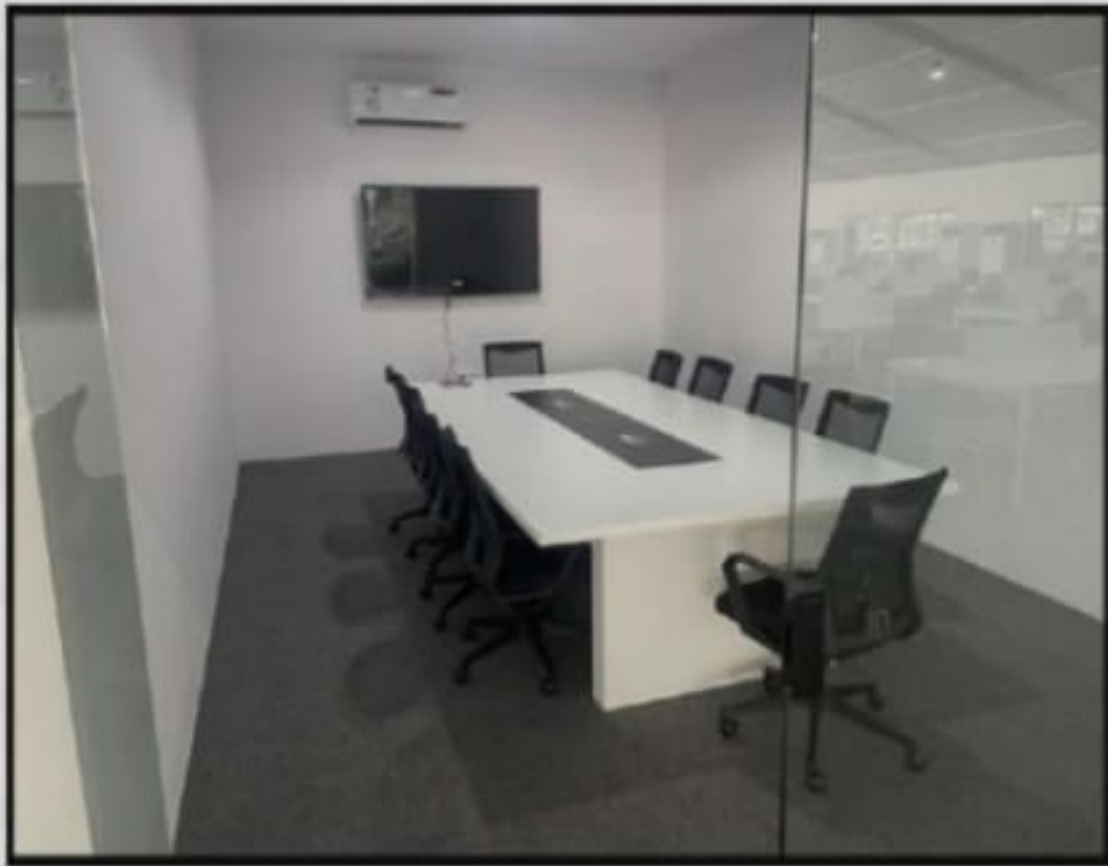
Providing the best professional design services and creative designs to transform our clients' dreams into reality

Our mission

Listening to users' needs, understanding their aspirations, and providing them with products that serve them and the local market



Al-Jawhara Project



Electromechanical works

Making and designing electrical plans * *

Designing and planning air conditioning systems

Making plans and sanitary systems. *

Studying and making plans for infrastructure. *

Studying systems for irrigating gardens and green spaces. *

Making plans and mechanical details. *

Making inventory tables for electromechanical plans. * *

Strategic planning for the integration of mechanical systems.

Electrical and technological



Interior Design

Measurements before design and preparation of international drawings *

Interior design plans and executive drawings *

Lighting distributions, internal networks, ceilings, floors,
home furniture and accessories *



9/21



engineering supervision

Determine the responsibilities of contractor engineers *

Clarifying the conditions, instructions and regulations related to implementation *

* Determine the basic steps to supervise the implementation of work

Determine the procedures followed in supervision work *

Raising the quality of project implementation *

Reducing problems and obstacles that may arise during the
implementation of projects *



Risk Management

Stages of risk management

Know the risks *

Risk analysis *

risk assessment *

Risk control *

Periodic monitoring and follow-up *



Furniture design

Furniture is one of the main and important elements in designing interior spaces, and without it, the elements of interior design are not complete. Therefore, we have a team specialized in designing furniture according to many considerations.

Functional considerations:

Furniture design must provide appropriate comfort, and comfort here is linked to the nature of use and the effectiveness it performs. The method of arranging furniture according to Modular Unit groups, which depend for their organization on a specific standard unit, also affects

Aesthetic considerations:

The visual elements that form the outer edges of the furniture represent the lines, shapes, proportions, seams, colors and texture of the material.



Lighting design

Interior space lighting depends on two types of lighting

Natural lighting *

Industrial lighting *

Lighting design is considered an integral part of interior design that people always ignore, but it has great importance from a technical, aesthetic, and even economic standpoint in reducing the excessive use of artificial lighting.



Coffee kiosks business

Prefabricated coffee kiosks are one of the most sought-after prefab buildings to keep up with the lifestyle

As part of our experience in prefabricated buildings for more than 20 years, we work on all the details to reach the distinguished building

We design and implement all drive-thru kiosks, mobile and fixed kiosks, realistic 20 and 30 designs.

Complete implementation of the kiosk: structures, cladding, thermal insulators, panels, bar, upper cabinets, battens and outer shutters, air conditioning, water tank, lighting, plumbing, and electricity (ready for immediate operation).

Help you with the internal division of devices

Implementation within a period ranging from 6030 days, depending on the design and requirements

The works comply with the municipality's requirements

High quality and providing guarantees on the work, including transportation and installation



Architectural works

Integrated architectural design for all types of projects *

Making detailed plans and integrated executive drawings *

Making architectural models *

Preparing works, bills of quantities and specifications *

Production of architectural perspectives *



Prefabricated building works

Prefabricated buildings are one example of the development of the field of prefabricated buildings, where the building is manufactured away from its site, and when all the building units are made separately, the parts are transported and shipped to the customer's site so that they can be easily assembled.

(Mosques - offices - workers' housing - coffee shops - rest areas - farms - security guard rooms - camps - complexes) Tailoring all desired interior sizes and models (gypsum board and interior boards)

Cement and board external tile work conforms to civil defense requirements. -
High quality and guarantees on the work,
including transportation and installation -



Smart home systems

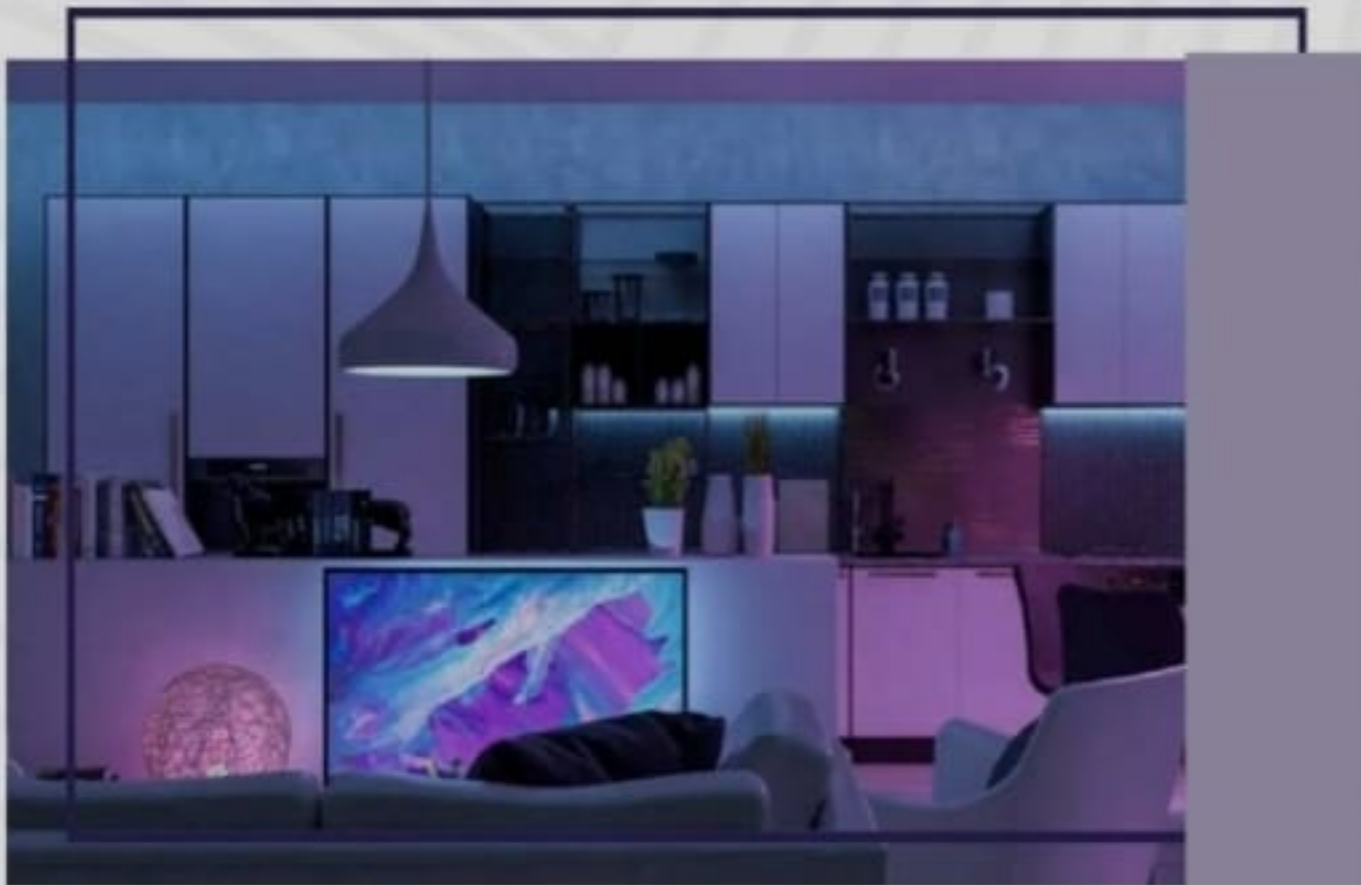
Audio system *

* Camera system

* Curtain system

* Door system

Air conditioning system *



project management

Sama Al-Rowad's project management staff organize and manage the full range of services necessary to oversee project planning and project management requirements using the project management methodology from master planning through implementation. Our main focus is

PMI adherence to the project schedule *

Avoid going over budget *

Maintaining high artistic quality *



Quality and safety

The elements of quality and safety are among the most important elements that we place in our priorities and we cannot neglect them. We have also, over many years, provided the most reliable design work and safe implementation, and we derive a lot of experience from them with long continuous work, and we are working to improve the quality in all our work. With a sustainable quality and safety system that keeps pace with ongoing challenges and meets the different needs of our customers



Our customers



Presidency of State Security



Islamic University.

Ministry
of Health



General Directorate of Health Affairs in Medina

General Administration of the Mujahideen

Ministry of Interior



Ministry of Interior (General Administration of the Mujahideen)

Medina

Region Municipality

Medinah Regional Municipality



Medina Region Municipality



Bambirock

General Contracting

to connect



0532600333

0561565411



assbco2030@gmail.com